



Vestil Manufacturing Corp.

2999 North Wayne Street, P.O. Box 507, Angola, IN 46703
 Telephone: (260) 665-7586 -or- Toll Free (800) 348-0868
 Fax: (260) 665-1339

www.vestil.com

info@vestil.com

BTC-CART & BTC-CART-WINCH



Receiving Instructions

After delivery, remove the packaging from the product. Inspect the product closely to determine whether it sustained damage during transport. If damage is discovered, record a complete description of it on the bill of lading. If the product is undamaged, discard the packaging.

NOTE: The end-user is solely responsible for confirming that product design, use, and maintenance comply with laws, regulations, codes, and mandatory standards applied where the product is used.

Technical Service & Replacement Parts

For answers to questions not addressed in these instructions and to order replacement parts, labels, and accessories, call our Technical Service and Parts Department at (260) 665-7586. The department can also be contacted online at <https://www.vestil.com/page-parts-request.php>.




Electronic copies of Instruction Manuals

Additional copies of this instruction manual may be downloaded from <https://www.vestil.com/page-manuals.php>.

Table of Contents		Page
Signal Words.....		2
Safety Instructions.....		2
Specifications.....		3, 4
National Standards.....		5
Exploded Views & Bills of Materials.....		5, 6
Assembling the Cart.....		7, 8
Using the Cart.....		8, 9
Record of Satisfactory Condition.....		9
Inspections & Maintenance.....		9, 10
Labeling Diagram.....		10
Limited Warranty.....		11

SIGNAL WORDS

This manual uses SIGNAL WORDS to indicate the likelihood of personal injuries, as well as the probable seriousness of those injuries, if the product is misused in the ways described. Other signal words call attention to uses of the product likely cause property damage. The following are signal words used in this manual and their definitions.

 DANGER	Identifies a hazardous situation which, if not avoided, WILL result in DEATH or SERIOUS INJURY . Use of this signal word is limited to the most extreme situations.
 WARNING	Identifies a hazardous situation which, if not avoided, COULD result in DEATH or SERIOUS INJURY .
 CAUTION	Indicates a hazardous situation which, if not avoided, COULD result in MINOR or MODERATE injury.
NOTICE	Identifies practices likely to result in product/property damage, such as operation that might damage the product.

SAFETY INSTRUCTIONS

Vestil strives to identify foreseeable hazards associated with the use of its products. However, no manual can address every conceivable risk. Minimize the likelihood of injury by observing the hazards identified below and by inspecting and maintaining the product as instructed in [INSPECTIONS & MAINTENANCE](#) on p. 9-10.

WARNING

Risks of serious personal injuries or death.

- **Read this manual in its entirety before assembling, installing, using, inspecting or servicing the product.** A copy of this manual should always be available to all persons who assemble, install, use, inspect, or maintain this device.
- DO NOT exceed the 4,000 lb. (1,818.2kg) capacity/maximum rated load. See Label 1153 on product; also see [LABELING DIAGRAM](#) on p. 10. If your unit is equipped with a winch, do not exceed the winch capacity (1,200 lb.; 545kg).
- Inspect the product before each use as directed in [INSPECTIONS & MAINTENANCE](#) on p. 9-10. DO NOT use the cart/fork attachment unless it is in satisfactory condition.
- Before pushing the cart or mounting it on the forks of your lift truck, make sure that the load retaining bracket ([item no. 12](#) on p. 5; [item 23](#) on p. 6) is deployed and in *SATISFACTORY CONDITION*.
- **ONLY push the cart. DO NOT PULL the cart. ONLY traverse even, level ground with the cart.**
- Lift the load a few inches above the ground. Load swing should be minimal and the load should not shift. If the load is not stable while suspended, return it to the ground and adjust the load rigging. Use this product consistently with the fork truck training you received.
- Slowly raise and lower the cart whenever it is mounted on the forks of your fork truck. Avoid sudden stops. Start and stop gradually and carefully. Turn slowly and carefully.
- DO NOT remove or obscure any label.
- Verify the placement and legibility of all labels shown in the [LABELING DIAGRAM](#) on p. 10. DO NOT use this device UNLESS all labels are easily readable and undamaged.
- DO NOT ride, or sit, on the cart.
- DO NOT lift or transport persons with the cart.
- DO NOT leave suspended loads unattended. Always return the cart to the ground and apply both caster brakes before leaving the cart unattended.
- Only use and park the cart on even, level ground. The caster brakes might not prevent the cart from moving if it is stopped on sloped ground.
- DO NOT modify the cart without written approval from Vestil. **Unapproved modifications automatically void the [LIMITED WARRANTY](#) (p. 11) and might make the cart unsafe to use.**
- ONLY raise the forks as high as necessary to raise the load off of the ground and to avoid contact with objects in the path of travel.

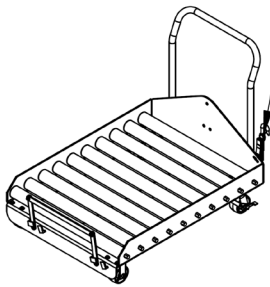
SPECIFICATIONS

Documents that provide specifications for BTC-CART and BTC-WINCH-CART products are available online to anyone who visits Vestil's website. Specifications include dimensions, net weight, and capacity information. To access the appropriate specifications document, navigate to this webpage: <https://www.vestil.com/product.php?FID=284>. Click the "Specifications" tab. Scroll the page to the entry for the product you purchased, and click the button in the "PDF" column that looks like a pencil inside a blue-bordered box. A PDF file will open. This file is the specifications document. Print a copy of the document and keep it with your copy of this manual. The following is an exemplar specifications document for model BTC-CART. An exemplar specifications document for model BTC-WINCH-CART is provided on the next page. It provides specifications that are current as of the revision date of this manual. However, you should still print a copy of the specifications document for your product from the website as soon as you receive it. If information in the printed document differs with the exemplar document (below) apply the information in the printed document. Contact [TECHNICAL SERVICE](#) to discuss specifications-related questions. Contact information is provided on the cover page.

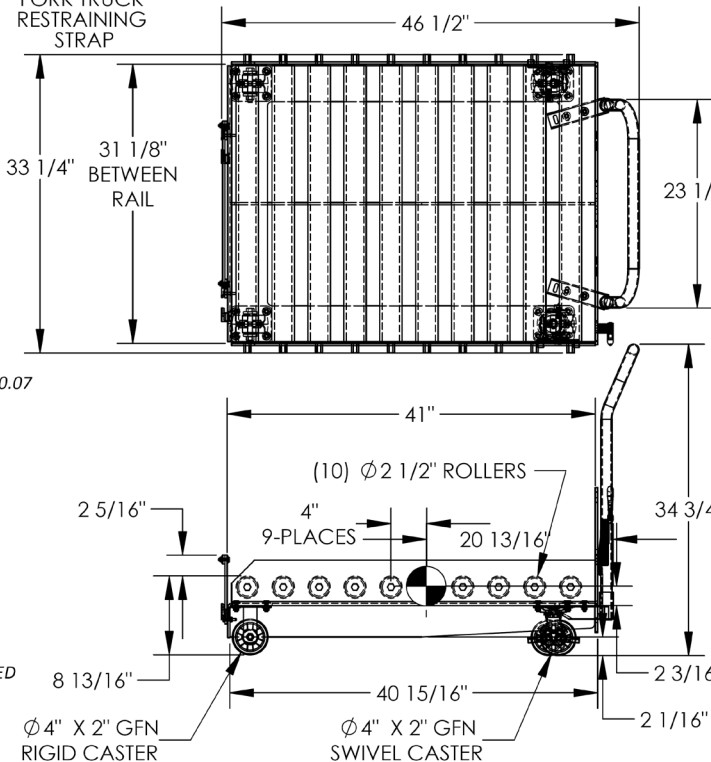
BATTERY TRANSFER CART - BTC-CART

APPROX WEIGHT: 310.07 lbs.
DOES NOT INCLUDE WEIGHT OF POWER OR PACKAGING!!!

ANY ADDITIONS, DELETIONS, OR OMISSIONS MUST BE CORRECTED ON THIS DRAWING AS THIS DRAWING WILL BE CONSIDERED ALL INCLUSIVE



3-D VIEW
FOR REFERENCE



APPROX. WEIGHT / LOST LOAD = 310.07
 MINIMUM EFFECTIVE THICKNESS =
 FORK LENGTH - 40 15/16"
 VERTICAL CENTER OF GRAVITY = 2 3/16"
 HORIZONTAL CENTER OF GRAVITY = 20 13/16"

NEVER EXCEED LOAD CENTER RATING PER FORKTRUCK MANUFACTURERS GUIDELINES.
 DO NOT USE THIS FORK TRUCK ATTACHMENT IF LOAD WILL EXCEED FORK TRUCK MANUFACTURER'S LOAD CENTER RATING

ALL GRAPHICS PROVIDED ARE FOR REFERENCE ONLY. IF CERTAIN DIMENSIONS ARE CRITICAL PLEASE VERIFY THOSE DIMENSIONS WITH YOUR SALESPERSON

DIMENSION TOLERANCE ± 1/4"

STANDARD FEATURES

MODEL NUMBER IS BTC-CART
 CAPACITY IS 4,000 LBS.
 USABLE WIDTH IS 31 1/8"
 USABLE LENGTH IS 41"
 FLOOR TO TOP OF ROLLERS IS 8 13/16" (+/- 1/8")
 OVERALL WIDTH IS 33 1/4"
 OVERALL LENGTH IS 46 1/2"
 OVERALL HEIGHT IS 34 3/4"
 NUMBER OF ROLLERS IS 10
 (2)-Ø4" X 2" GFN RIGID CASTERS
 (2)-Ø4" X 2"GFN SWIVEL CASTERS
 TOUGH BAKED IN POWDER COAT YELLOW FINISH

SPECIAL FEATURES

NONE

APPROVAL

I, THE UNDERSIGNED, AGREE THAT THE PRODUCT AS REPRESENTED SATISFIES DESIGN AND DIMENSION REQUIREMENTS. I ALSO ACKNOWLEDGE MY DUTY TO CONFIRM PRODUCT AND INSTALLATION COMPLIANCE WITH ALL APPLICABLE FEDERAL, STATE AND LOCAL REGULATIONS AND STANDARDS.

UNITS REQUIRING APPROVAL DRAWINGS OR MODIFIED ARE NON-RETURNABLE
 As drawn As marked

Signed: _____ Date: _____

Printed Name: _____

LEAD TIME WILL START UPON RECEIPT OF SIGNED APPROVAL DRAWING

DISTRIBUTOR'S NAME: VESTIL MANUFACTURING		P.O.# X
DRAWN BY: Q.WESTFALL	DATE: 06/06/07	W.O.# X
REFERENCE: X	SCALE: 1:14	SALES: X
QUOTED LEAD TIME: X	QUOTE # X	FILE NAME: 33-007-174

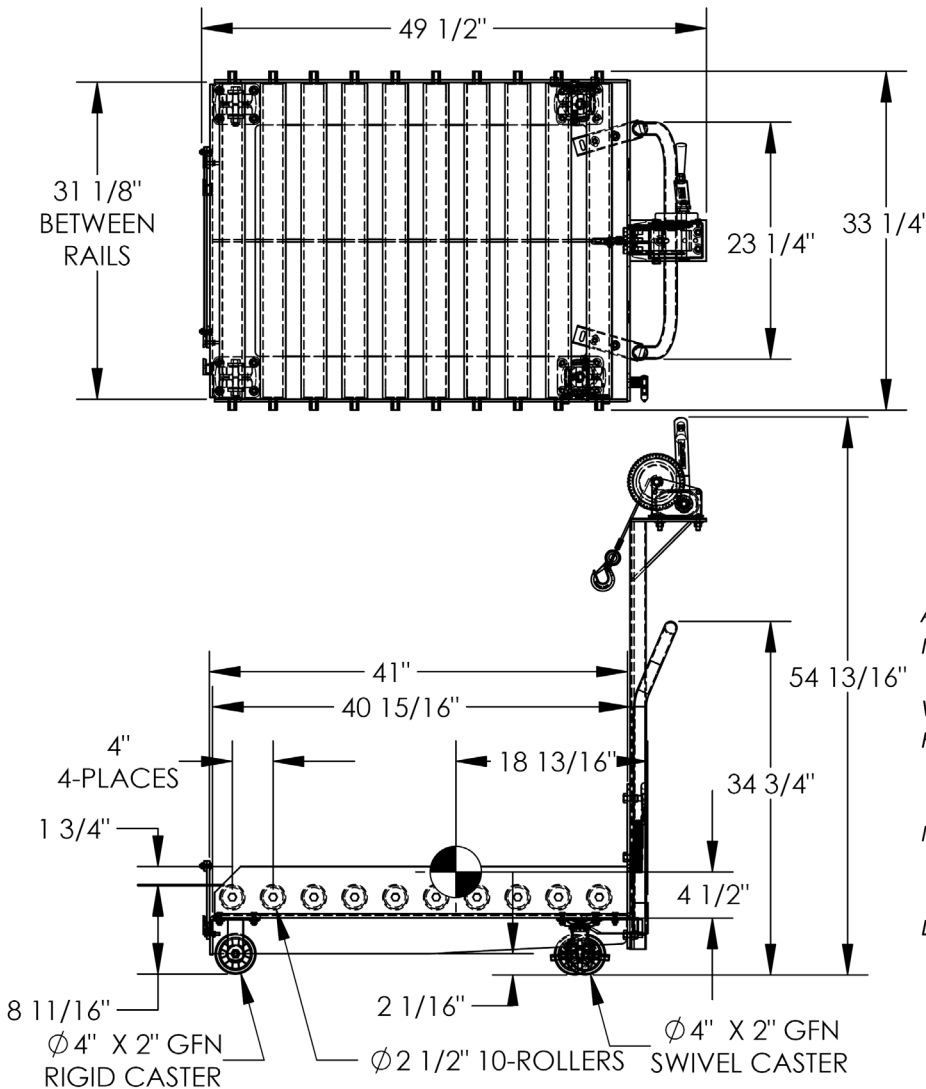
SPECIFICATIONS (continued from p.3)

BATTERY TRANSFER CART W/WINCH - BTC-CART-WINCH

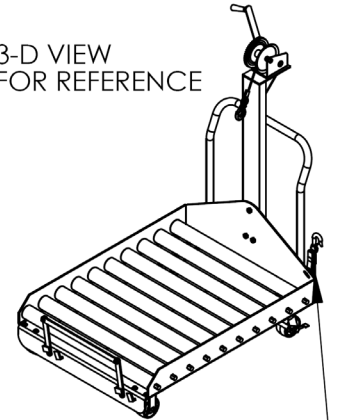
APPROX WEIGHT: 343.14 lbs.

DOES NOT INCLUDE WEIGHT OF POWER OR PACKAGING!!!

ANY ADDITIONS, DELETIONS, OR OMISSIONS MUST BE CORRECTED ON THIS DRAWING AS THIS DRAWING WILL BE CONSIDERED ALL INCLUSIVE



3-D VIEW FOR REFERENCE



FORK TRUCK RESTRAINING STRAP

APPROX. WEIGHT / LOST LOAD = 343.14
 MINIMUM EFFECTIVE THICKNESS=
 FORK LENGTH - 40 15/16"
 VERTICAL CENTER OF GRAVITY = 4 1/2"
 HORIZONTAL CENTER OF GRAVITY = 18 13/16"

NEVER EXCEED LOAD CENTER RATING PER FORKTRUCK MANUFACTURERS GUIDELINES. DO NOT USE THIS FORK TRUCK ATTACHMENT IF LOAD WILL EXCEED FORK TRUCK MANUFACTURER'S LOAD CENTER RATING

ALL GRAPHICS PROVIDED ARE FOR REFERENCE ONLY. IF CERTAIN DIMENSIONS ARE CRITICAL PLEASE VERIFY THOSE DIMENSIONS WITH YOUR SALESPERSON

DIMENSION TOLERANCE ± 1/4"

STANDARD FEATURES

- MODEL NUMBER IS BTC-CART-WINCH
- CAPACITY IS 4,000 LBS.
- USABLE WIDTH IS 31 1/8"
- USABLE LENGTH IS 41"
- FLOOR TO TOP OF ROLLERS IS 8 11/16" (+/-1/8")
- OVERALL WIDTH IS 33 1/4"
- OVERALL LENGTH IS 49 1/2"
- OVERALL HEIGHT IS 54 13/16"
- NUMBER OF ROLLERS IS 10
- (2)-Ø4" X 2" GFN RIGID CASTERS
- (2)-Ø4" X 2"GFN SWIVEL CASTERS
- TOUGH BAKED IN POWDER COAT YELLOW FINSH

SPECIAL FEATURES

NONE

APPROVAL

I, THE UNDERSIGNED, AGREE THAT THE PRODUCT AS REPRESENTED SATISFIES DESIGN AND DIMENSION REQUIREMENTS. I ALSO ACKNOWLEDGE MY DUTY TO CONFIRM PRODUCT AND INSTALLATION COMPLIANCE WITH ALL APPLICABLE FEDERAL, STATE AND LOCAL REGULATIONS AND STANDARDS.

UNITS REQUIRING APPROVAL DRAWINGS OR MODIFIED ARE NON-RETURNABLE

[] As drawn [] As marked

Signed: _____ Date: _____

Printed Name: _____

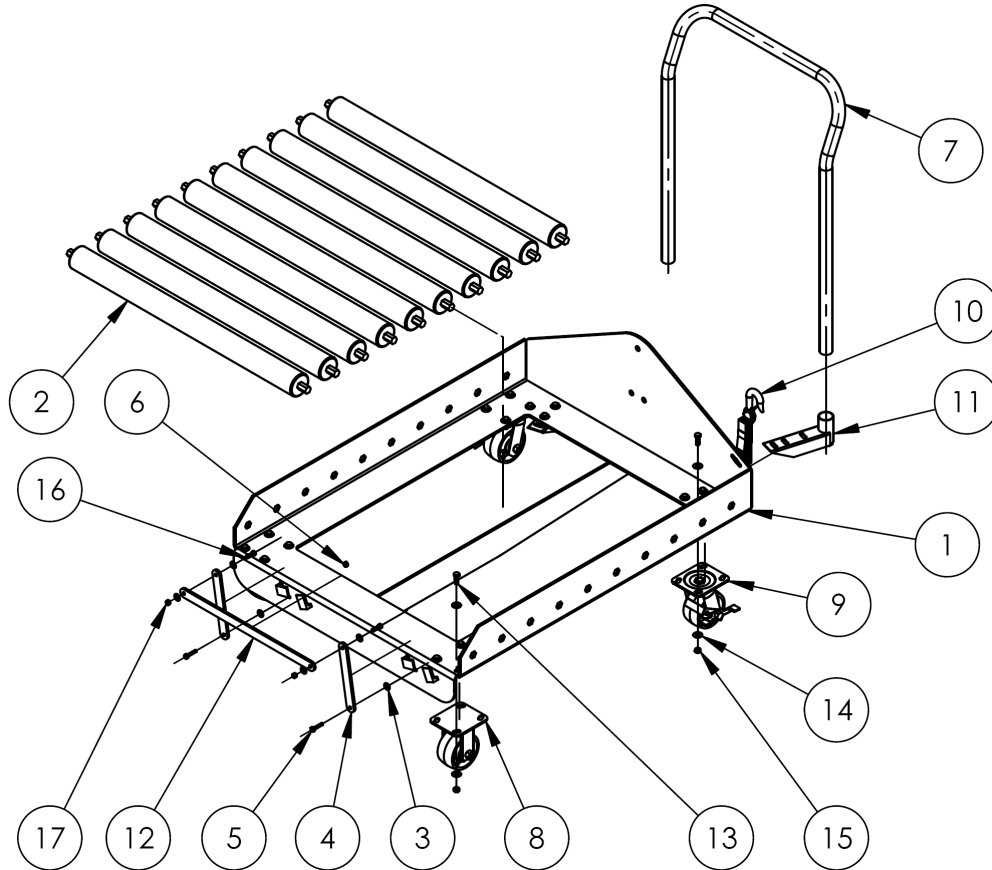
LEAD TIME WILL START UPON RECEIPT OF SIGNED APPROVAL DRAWING

DISTRIBUTOR'S NAME:		P.O.#
VESTIL MANUFACTURING		X
DRAWN BY: Q.WESTFALL		W.O.#
DATE: 06/06/07		X
REFERENCE: X	SCALE: 1:16	SALES: X
QUOTED LEAD TIME: X	QUOTE #	FILE NAME:
	X	33-007-175-001

NATIONAL STANDARDS

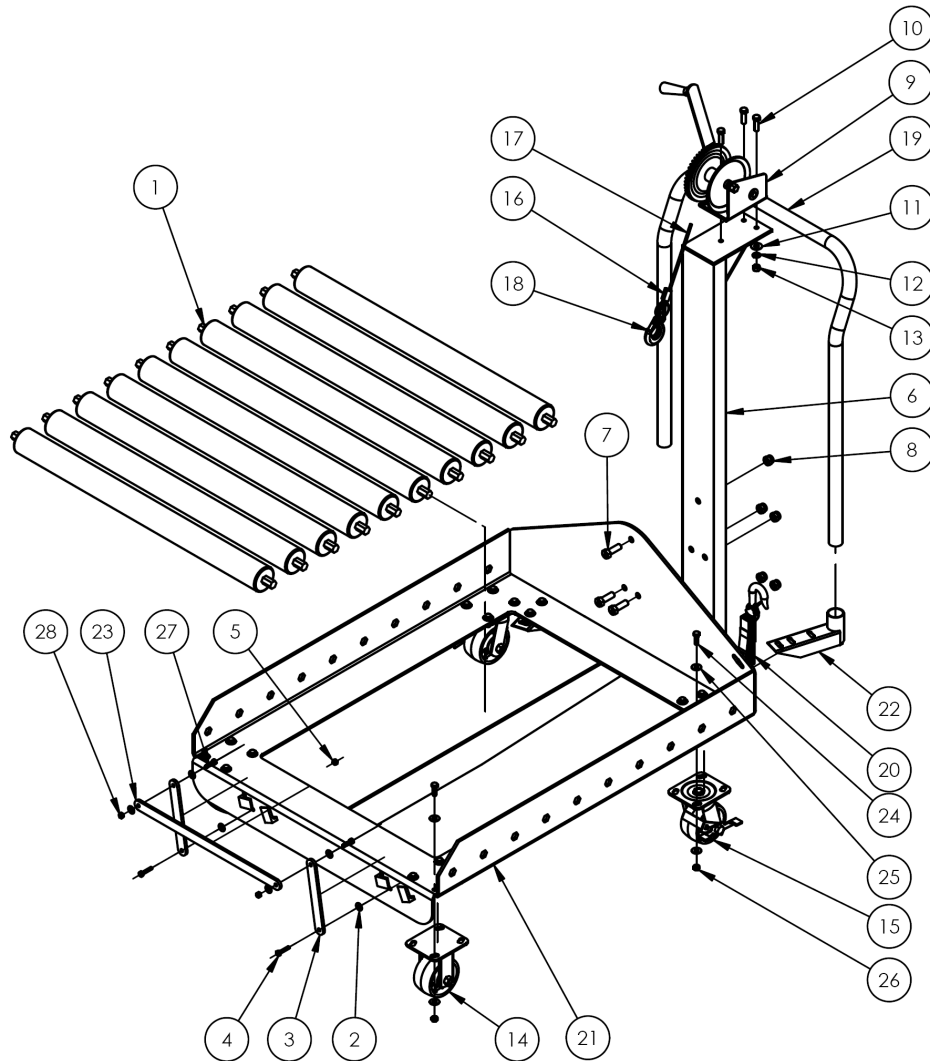
US (federal) OSHA Rule 1910.178 (29 CFR 1910.178; the "Rule") classifies this device as a front end attachment whenever it is mounted on a lift truck. The Rule incorporates American National Standard ANSI/ITSDF B56.1 (the "Standard"). The Standard is published by the Industrial Truck Standards Development Foundation on its website (www.itsdf.org) where it is freely downloadable at <http://www.itsdf.org/cue/b56-standards.html>. Before putting this device into service, you must acquire a copy of the Standard. Apply all relevant parts of Part II: For the User. If instructions provided in this manual conflict with the Standard, then you should apply the instructions in the Standard. Vestil requests that you immediately share any conflicts with its [TECHNICAL SERVICE](#) personnel. Contact information for the [TECHNICAL SERVICE](#) department appears on the cover page of this manual.

BTC-CART EXPLODED VIEW AND BILL OF MATERIALS (33-006-174)



Item	Part no.	Description	Qty.	Item	Part no.	Description	Qty.
1	33-514-255	WELDMENT, FRAME, BASE PAN	1	10	08-145-028	FORK ATTACHMENT RESTRAINT STRAP	1
2	33-027-005	CONVEYOR ROLLER, Ø 2 1/2" X 31"	10	11	16-016-063	BRACKET, HANDLE	2
3	33004	FLAT WASHER, USS, ZINC PLATED, Ø1/4"	6	12	33-016-148	BRACKET, FRONT STOP (BATTERY RETAINING BRACKET)	1
4	33-037-006	LOCK, BATTERY HOLDER	2	13	11055	HEX BOLT, GRADE A, ZINC PLATED, 5/16-18 X 1	20
5	11007	Ø 1/4-20 UNC x 1 1/4 LG HEX BOLT, GRADE A	2	14	33006	FLAT WASHER, ZINC PLATED, USS, Ø5/16"	40
6	37018	NYLON LOCK NUT, GRADE 2, ZINC FINISH, 1/4"-20	2	15	36104	HEX NUT, GRADE A, ZINC PLATED, 5/16-18	20
7	99-025-014	HANDLE, PUSH, 22" C/C	1	16	11005	BOLT, GRADE A, Ø1/4-20 UNC x 1 LG, HHCS #2 Z-PLATED	2
8	16-132-260	CASTER, RIGID, 4X2	2	17	36302	NUT, HEX NUT Z-PLATED, Ø 1/4 - 20, #5, GRADE 5	2
9	16-132-259	CASTER, SWIVEL W/ BRAKE, 4X2	2				

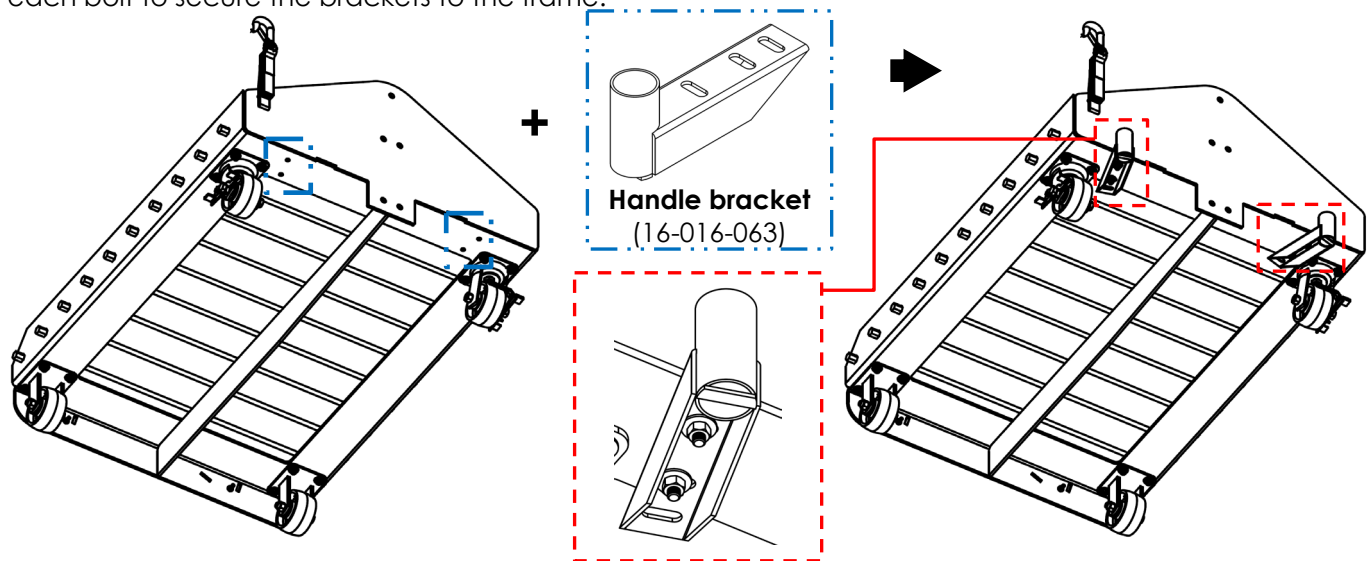
BTC-WINCH-CART EXPLODED VIEW AND BILL OF MATERIALS (33-006-175-001)



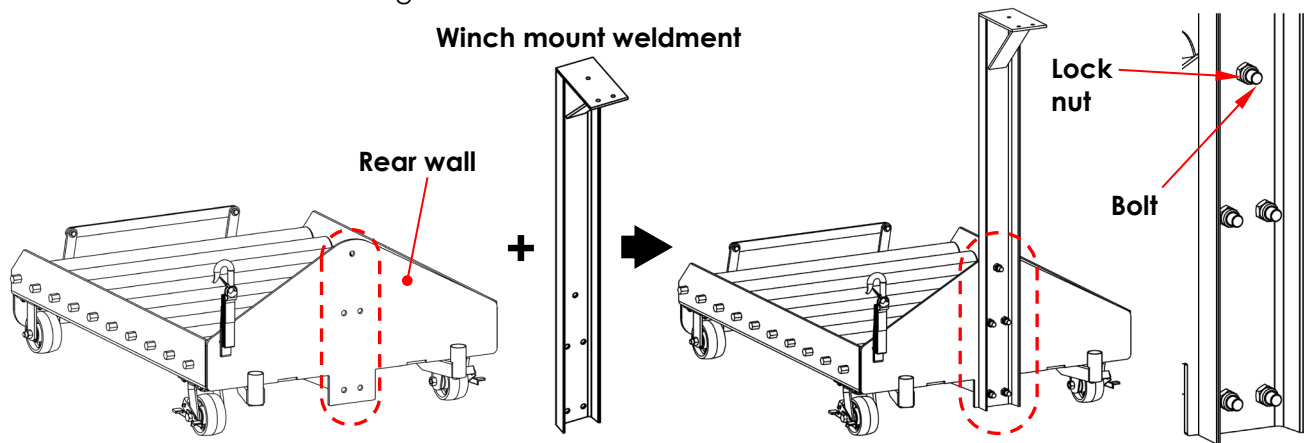
Item	Part no.	Description	Qty.	Item	Part no.	Description	Qty.
1	33-027-005	CONVEYOR ROLLER, Ø 2 1/2" X 31"	10	15	16-132-259	CASTER, SWIVEL W/ BRAKE, 4X2	2
2	33004	FLAT WASHER, USS, ZINC PLATED, Ø1/4"	6	16	21-145-012	SPECIALTY HARDWARE, CABLE ANCHOR	1
3	33-037-006	LOCK, BATTERY HOLDER	2	17	42-145-004	SPECIALTY HARDWARE, Ø3/16 AIR CRAFT CABLE, 180" LONG	1
4	11007	Ø 1/4-20 UNC x 1 1/4 LG HEX BOLT, GRADE A	2	18	08-145-045	CLASP HOOK, 3/4" HOOK OPENING	1
5	37018	NYLON LOCK NUT, GRADE 2, ZINC FINISH, 1/4"-20	2	19	99-025-014	HANDLE, PUSH, 22" C/C	1
6	33-514-131	WELDMENT, WINCH MOUNT	1	20	08-145-028	FORK ATTACHMENT RESTRAINT STRAP	1
7	13209	Hex Cap Screw, Grade 5, Zinc Plated, 1/2-13x1.5	5	21	33-514-255	WELDMENT, FRAME, BASE PAN	1
8	37030	1/2"-13 NYLON INSERT LOCK NUT, GRADE 2	5	22	16-016-063	BRACKET, HANDLE	2
9	21-042-002-001	HAND WINCH, ONE PIECE STRAIGHT HANDLE GRIP	1	23	33-016-148	BRACKET, FRONT STOP	1
10	11107	HEX BOLT, GRADE A, ZINC FINISH, 3/8"-16 x 1-1/4"	3	24	11055	HEX BOLT, GRADE A, ZINC PLATED, 5/16-18 X 1	21
11	33008	FLAT WASHER, LOW CARBON, USS, ZINC PLATED, 3/8"	3	25	33006	FLAT WASHER, ZINC PLATED, USS, Ø5/16"	41
12	33622	SPLIT LOCK WASHER, CARBON STEEL, MEDIUM ZINC FINISH, 3/8"	3	26	36104	HEX NUT, GRADE A, ZINC PLATED, 5/16-18	21
13	36106	HEX NUT, GRADE A, ZINC PLATED, 3/8-16	3	27	11005	BOLT, GRADE A, Ø1/4-20 UNC x 1 LG, HHCS #2 Z-PLATED	2
14	16-132-260	CASTER, RIGID, 4X2	2	28	36302	NUT, HEX NUT Z-PLATED, Ø 1/4 - 20, #5, GRADE 5	2

ASSEMBLING THE CART

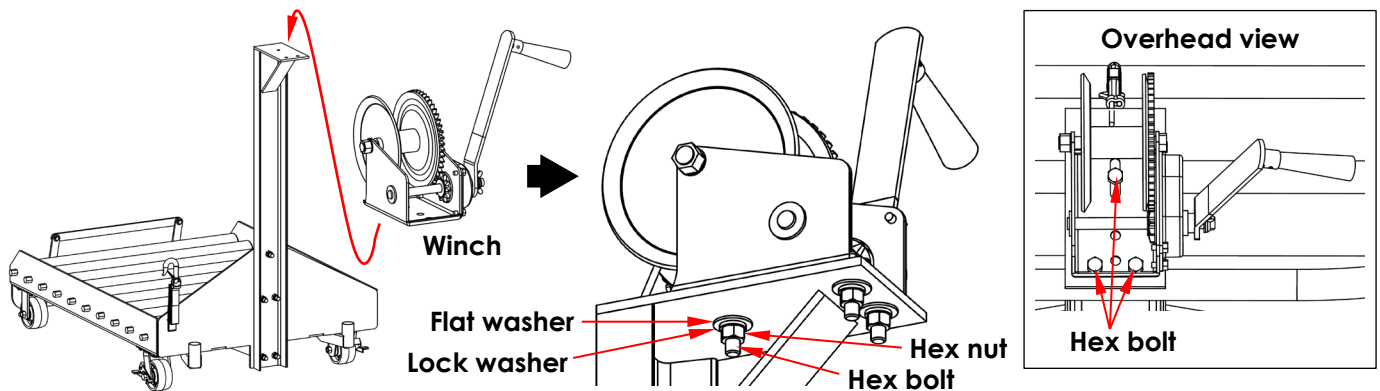
STEP 1: Attach the handle brackets (16-016-063) to the underside of the cart with 5/16-18 x 1" bolts (11055), 5/16" flat washers (33006), and 5/16"-18 hex nuts (36104) as shown in the diagrams. Slide a 5/16" flat washer onto four bolts (11055). Insert the bolts through the bolt holes in the cart frame. Align the bolt holes in the handle bracket with the bolts. Apply another flat washer (33006) and a hex nut (36104) to each bolt to secure the brackets to the frame.



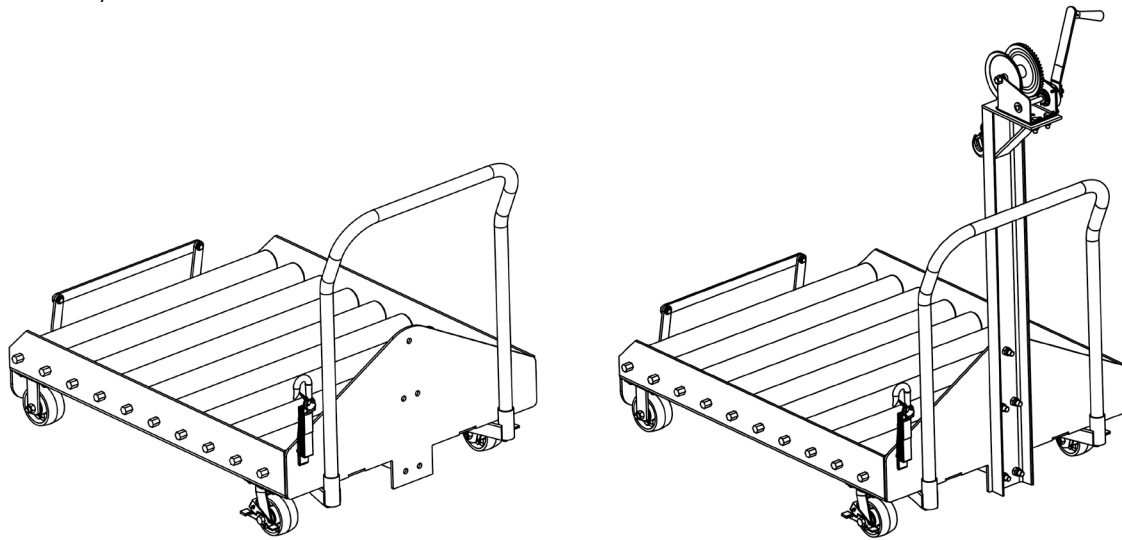
STEP 2 (BTC-WINCH-CART): Attach the winch mount weldment (33-514-131) to the frame with 5 sets of 1/2"-13 x 1" bolts (13209) and 1/2"-13 lock nuts (37030). Align the bolt holes in the winch mount weldment with the bolt holes in the rear wall of the cart (circled). Insert a bolt through each of the 5 bolt holes in the rear wall of the cart and through the bolt holes in the weldment. Secure each bolt with a lock nut.



STEP 3 (BTC-WINCH-CART): Fasten the winch (21-042-002-001) to the top of the winch mount bracket with 3/8"-16 hardware. Set the winch on the top bracket of the winch mount weldment. Align the bolt holes in the bottom of the winch with the bolt holes in the bracket. Insert 3/8"-16x1.25" hex bolts through the bolt holes. Secure each bolt with a 3/8" flat washer, 3/8" lock washer, and 3/8"-16 hex nut.



STEP 4: Install the handle. Set the legs of the handle in the sockets. The angled portion of the handle should face away from the cart.

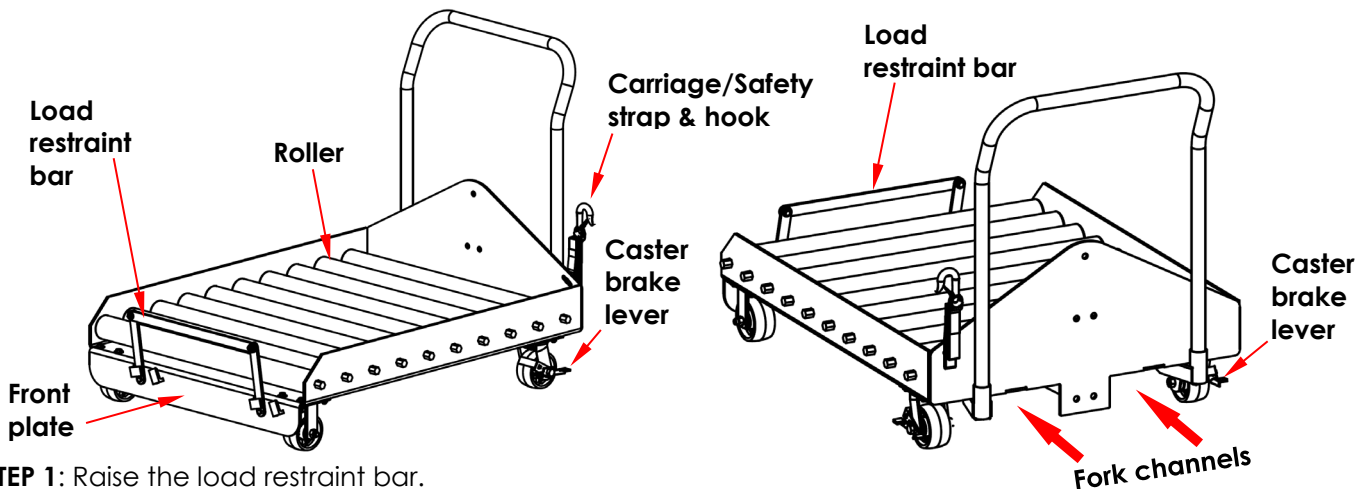


USING THE CART: Refer to the applicable [EXPLODED VIEW](#) (p. 5 or p. 6) to identify features. To see a video of this product in use, visit <https://www.vestil.com/product.php?FID=284>, scroll the page to the Videos selection bar, click the bar, and then click on video.

⚠ WARNING

USING THIS CART AS A FRONT END ATTACHMENT AFFECTS THE CENTER OF GRAVITY OF YOUR LIFT TRUCK. BEFORE MOUNTING THIS DEVICE ON YOUR FORK TRUCK, US FEDERAL REGULATION 29 CFR 1910.178 REQUIRES YOU TO CONTACT THE MANUFACTURER OF YOUR LIFT TRUCK TO REQUEST:

- WRITTEN APPROVAL TO USE THE ATTACHMENT WITH YOUR LIFT TRUCK (29 CFR 1910.178(a)(4); AND
- MARKINGS FOR THE LIFT TRUCK THAT IDENTIFY THE ATTACHMENT AND GIVE THE APPROXIMATE WEIGHT OF THE TRUCK AND ATTACHMENT AT MAXIMUM ELEVATION WITH A Laterally-Centered Load (29 CFR 1910.178(a)(5)). **DO NOT USE THIS DEVICE UNTIL YOUR LIFT TRUCK IS MARKED WITH CORRECTED CAPACITY TAGS. ONLY USE THIS DEVICE WITH LIFT TRUCKS THAT ARE MARKED WITH CORRECTED CAPACITY TAGS.**



STEP 1: Raise the load restraint bar.

STEP 2: Load the cart. Distribute the load evenly over the rollers.

If your cart is equipped with a winch (BTC-WINCH-CART), attach the winch hook to the battery. Extract the battery from the fork truck’s battery compartment, by turning the winch handle in the appropriate direction to retract the cable.

STEP 3: Transport the battery to the offloading location.

a) Carefully push the loaded cart to the unloading site. Apply both caster brakes to immobilize the cart whenever the cart is stopped. Press down on the brake levers to apply the brakes. **OR**

b) Mount the cart on the forks of your lift truck. Insert the forks through the fork channels. Drive forward until the fork tips gently contact the front plate of the cart. Wrap the carriage strap around the carriage of your fork truck without slack. Attach the hook to the strap or to carriage. Elevate the forks. Do not raise the forks any higher than necessary. Start slowly and accelerate gradually. Turn and stop very carefully. Loads applied to the rollers will tend to move forwards, i.e. against the load restraint bar, as you slow down or turn. Before leaving the cart unattended, lower it to the ground and apply both caster brakes.

RECORD OF SATISFACTORY CONDITION

Before the cart is put into service, make a written record of its condition. Include observations of all features, i.e. rollers, load restraint bar and linkages, casters, caster brakes, carriage/safety strap and hook, the supporting frame, welds, handle, and (if applicable) winch mount bracket and all parts of the winch (cable, spool, hook, etc.). Thoroughly photograph the unit and all labels applied to it. Describe where each label is located. Collect all writings and photographs in a file. Your file is a record of the unit in satisfactory condition. Compare the results of all inspections to your record to determine if the unit is in satisfactory condition.

INSPECTIONS & MAINTENANCE

NOTICE

Proper use, maintenance, and storage are essential for this product to function properly.

- Inspect the unit as instructed and at least as frequently as instructed.
- Use, inspect, and maintain this cart as instructed in the current revision of ANSI/ITSDF B56.1.
- Store the unit in a dry location.

Compare the results of each inspection to your [RECORD OF SATISFACTORY CONDITION](#) to determine whether the unit is in satisfactory condition. DO NOT use the cart unless it is in satisfactory condition. Clean the cart with a mild soap & water solution. Only use manufacturer-approved replacement parts to restore the unit to satisfactory condition. *Never make temporary repairs of damaged or missing parts.* **DON'T GUESS! If you have any questions about the condition of your unit, contact the [TECHNICAL SERVICE](#) department.** The phone number is provided on the cover page of this manual. Purely cosmetic changes, such as chipped paint, are not changes from satisfactory condition. However, touchup paint should be applied to all areas where the finish is damaged as soon as damage occurs to prevent rust formation. Left unaddressed, rusting could compromise the soundness of the metal and create a safety hazard.

Inspect the following before each use:

1. Carriage/Safety strap and snap hook: Confirm that the safety strap and hook are in satisfactory condition. The spring latch (of the hook) should automatically close and remain closed unless deliberately opened. Look for strap fraying, cuts, burns, tears, etc. Replace the strap if any cut or tear or other damage extends across 25% of the strap width or more.
2. Labeling: All labels should be easily readable and in place as shown in the [LABELING DIAGRAM](#) on p. 10. If a label is damaged, not easily readable, or missing, contact [TECHNICAL SERVICE](#) to order a replacement.

Inspect the following at least 1 time per month:

1. Fasteners (hardware): Confirm that all bolts, nuts, washers, pins, cotter pins, etc. and securely fastened. Tighten loose connections. If a lock nut is removed for any reason, it must be replaced with a new lock nut.
2. Frame elements: Confirm that the frame is structurally sound and free of rust. The frame must be square and rigid. Look for bends, cracks, rust, and corrosion. Confirm that all welds are intact. Remove dirt & debris. Apply touchup paint to area where the finish is damaged. Make sure that the load restraint bar and its linkages are securely attached to the frame. Look for bends, cracks, and other damage.
3. Rollers: Confirm that each roller is able to rotate freely and smoothly, is securely attached to both side of the frame, and is undamaged.
4. Casters: Examine each caster for significant wear, wobbling, deformations, warps, cracks, and other forms of damage. Confirm that caster brakes work properly. Apply the brakes and confirm that the cart cannot move without significant effort.

5. Winch and winch mount weldment: Examine fasteners that attach the weldment to the frame (rear wall). Tighten loose connections. Confirm that the winch is securely attached to the top of the weldment. Make sure that the winch cable is undamaged (no rust or corrosion, no birdcaging, breaks, frays, cuts, tears, etc.). The cable should smoothly unwind from, and wind back onto, the spool as the winch handle is rotated in the corresponding direction. Examine the hook for damage such as warps, bends, cracks, etc. Make sure that the hook is securely attached to the cable.

6. Handle and handle brackets: Inspect the handle brackets. Make sure that both brackets are solidly fastened to the underside of the cart frame. Tighten loose fasteners. Examine the brackets for rust/corrosion around fasteners and between the brackets and the bottom of the cart. Confirm that both handle legs seat properly inside the handle bracket sockets.

LABELING DIAGRAM

Label content and location are subject to change so your product might not be labeled exactly as shown. Compare the diagram below to your [RECORD OF SATISFACTORY CONDITION](#). If differences between actual labeling and this diagram exist, contact [TECHNICAL SERVICE](#). Replace all labels that are damaged, missing, or not easily readable (e.g. faded). To order replacement labels, or to inquire whether your unit is properly labeled, contact the technical service and parts department online at http://www.vestilmfg.com/parts_info.htm or by calling (260) 665-7586 and asking for the Parts Department.



A: Label 658

⚠ WARNING	⚠ ADVERTENCIA	⚠ AVERTISSEMENT
Do not operate or move with unstable loads DO NOT LOAD beyond rated capacity DISTRIBUTE LOAD EVENLY DO NOT sit or ride	No use a mueva con cargas inestables No cargue mas de la capacidad tasada DISTRIBUYA LA CARGA A NIVEL NO SE SIENTE o vaya en el carro	Ne pas utiliser avec une charge instable NE PAS CHARGER au-delà du débit nominale DISTRIBUER la charge régulièrement NE PAS VOUS ASSEOIR OU VOUS PROMENER sur le chariot
		<small>658 rev 0308</small>

B: Label 218

⚠ WARNING	⚠ ADVERTENCIAS
Improper use might result in death or serious personal injury. Attach device to fork carriage with safety chain/strap. • Drive lift truck forward until forks contact ends of fork pockets. • Chain/straps must not be able to disconnect (slide free) from carriage. • Safety chain/strap must be taut. Connect chain/strap to carriage via shortest line.	El uso impropio puede resultar en muerte o heridas personales. Atar aparato al mástil del montacargas con cadenas/correas. • Maneje el montacargas para adelante hasta que las cuñas hagan contacto con la orilla del bolsillo de las cuñas. • La cadenas y correas no deben de deslizarse (soltarse) del mástil del montacargas. • La cadena/correa de seguridad debe de estar apretado. Asegure la cadena/correa al mástil via la ruta mas corta.
	<small>218 rev 0910</small>

C: Label 1153

MODEL / MODÉLO / MODÈLE _____
WEIGHT / PESO / MASS _____
CAPACITY / CAPACIDAD / CAPACITÉ _____
SERIAL / SERIE / SÉRIE _____
UNITS: 2.2 lb. = 1kg 1" (or 1in.) = 2.54cm
1153

D: Label 782

⚠ WARNING	⚠ ADVERTENCIA
DO NOT use with fork truck. Engage stops when moving.	NO USE con la transpaleta. Ponga los frenos cuando en movimiento.
	<small>782</small>

E: Label 212

⚠ WARNING	⚠ ADVERTENCIA	⚠ AVERTISSEMENT
Immobilize by applying all caster brakes and/or floor locks when in use, loading, and unloading.	Inmovilice aplicando todos los frenos de las ruedas y / o bloqueos del piso cuando esté en uso, cargando y descargando.	Immobiliser en appliquant tous les freins des roulettes et / ou les verrous de plancher lors de l'utilisation, du chargement et du déchargement.
		<small>212 Rev 0303</small>



LIMITED WARRANTY

Vestil Manufacturing Corporation ("Vestil") warrants this product to be free of defects in material and workmanship during the warranty period. Our warranty obligation is to provide a replacement for a defective, original part covered by the warranty after we receive a proper request from the Warrantee (you) for warranty service.

Who may request service?

Only a warrantee may request service. You are a warrantee if you purchased the product from Vestil or from an authorized distributor AND Vestil has been fully paid.

Definition of "original part"?

An original part is a part used to make the product as shipped to the Warrantee.

What is a "proper request"?

A request for warranty service is proper if Vestil receives: 1) a photocopy of the Customer Invoice that displays the shipping date; AND 2) a written request for warranty service including your name and phone number. Send requests by one of the following methods:

<u>US Mail</u>	<u>Fax</u>	<u>Email</u>
Vestil Manufacturing Corporation 2999 North Wayne Street, PO Box 507 Angola, IN 46703	(260) 665-1339 <u>Phone</u> (260) 665-7586	info@vestil.com Enter "Warranty service request" in subject field.

In the written request, list the parts believed to be defective and include the address where replacements should be delivered. After Vestil receives your request for warranty service, an authorized representative will contact you to determine whether your claim is covered by the warranty. Before providing warranty service, Vestil will require you to send the entire product, or just the defective part (or parts), to its facility in Angola, IN.

What is covered under the warranty?

The warranty covers defects in the following original, dynamic parts: motors, hydraulic pumps, motor controllers, and cylinders. It also covers defects in original parts that wear under normal usage conditions ("wearing parts"), such as bearings, hoses, wheels, seals, brushes, and batteries.

How long is the warranty period?

The warranty period for original dynamic components is 90 days. For wearing parts, the warranty period is 90 days. Both warranty periods begin on the date Vestil ships the product to the Warrantee. If the product was purchased from an authorized distributor, the periods begin when the distributor ships the product. Vestil may, at its sole discretion, extend a warranty period for products shipped from authorized distributors by up to 30 days to account for shipping time.

If a defective part is covered by the warranty, what will Vestil do to correct the problem?

Vestil will provide an appropriate replacement for any covered part. An authorized representative of Vestil will contact you to discuss your claim.

What is not covered by the warranty?

The Warrantee (you) is responsible for paying labor costs and freight costs to return the product to Vestil for warranty service.

Events that automatically void this Limited Warranty.

- Misuse;
- Negligent assembly, installation, operation or repair;
- Installation/use in corrosive environments;
- Inadequate or improper maintenance;
- Damage sustained during shipping;
- Collisions or other accidents that damage the product;
- Unauthorized modifications: Do not modify the product IN ANY WAY without first receiving written authorization from Vestil.

Do any other warranties apply to the product?

Vestil Manufacturing Corp. makes no other express warranties. All implied warranties are disclaimed to the extent allowed by law. Any implied warranty not disclaimed is limited in scope to the terms of this Limited Warranty. Vestil makes no warranty or representation that this product complies with any state or local design, performance, or safety code or standard. Noncompliance with any such code or standard is not a defect in material or workmanship.